

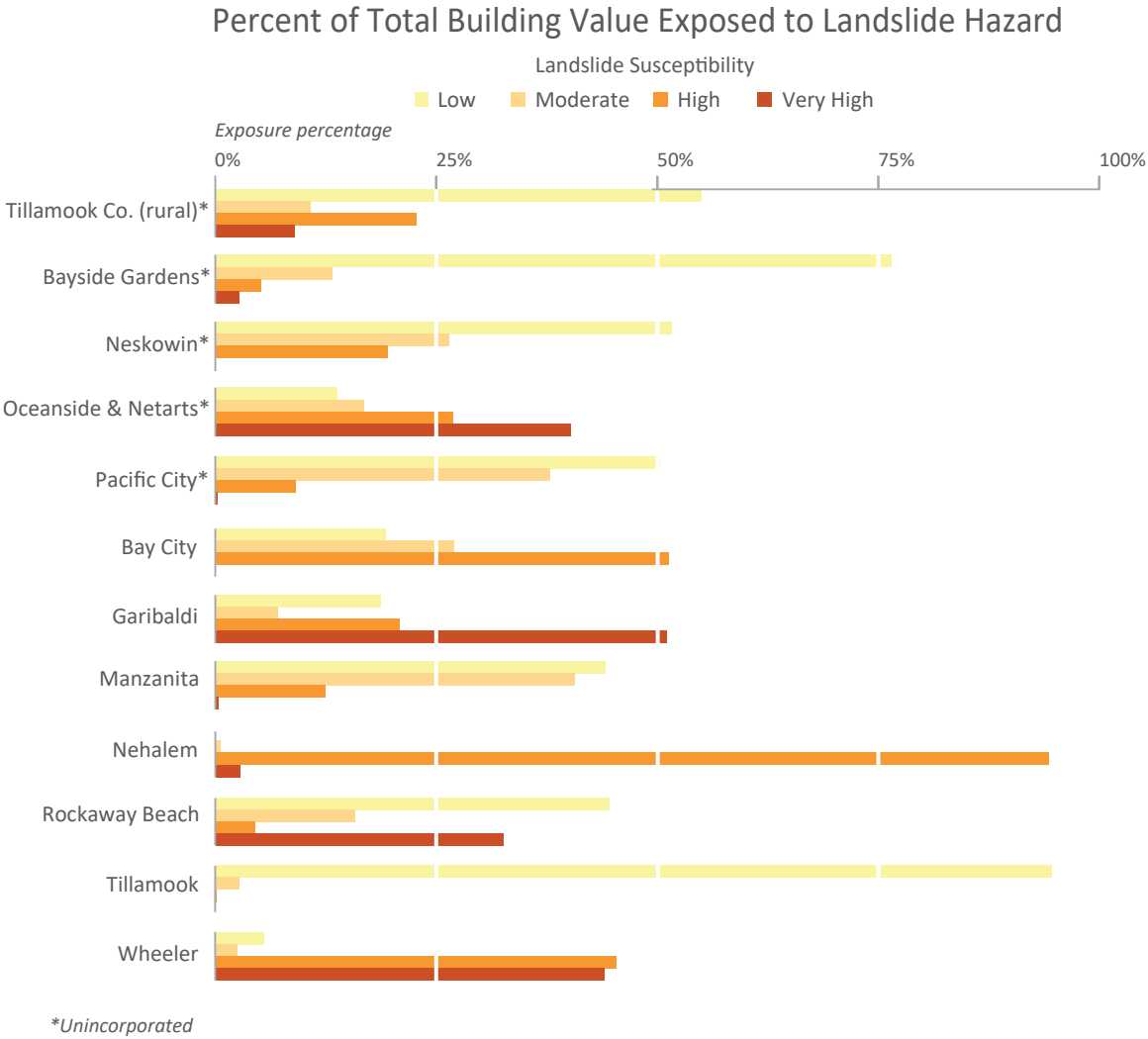


STATE OF OREGON
DEPARTMENT OF GEOLOGY AND
MINERAL INDUSTRIES
RUARRI J. DAY-STIRRAT, STATE GEOLOGIST
www.oregongeology.org

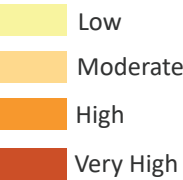
Landslide Susceptibility Map of Tillamook County, Oregon



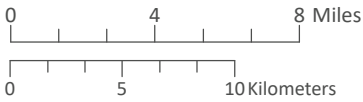
Study Location Map



Landslide Susceptibility



Landslide Susceptibility is categorized as Low, Moderate, High, and Very High, which describes the general level of susceptibility to landslide hazard. The dataset is an aggregation of three primary sources: landslide inventory (SLIDO), generalized geology, and slope.



This map is an overview map and not intended to provide details at the community scale. The GIS data that are published with the Tillamook County Multi-Hazard Risk Assessment can be used to inform regarding queries at the community scale.

PACIFIC OCEAN

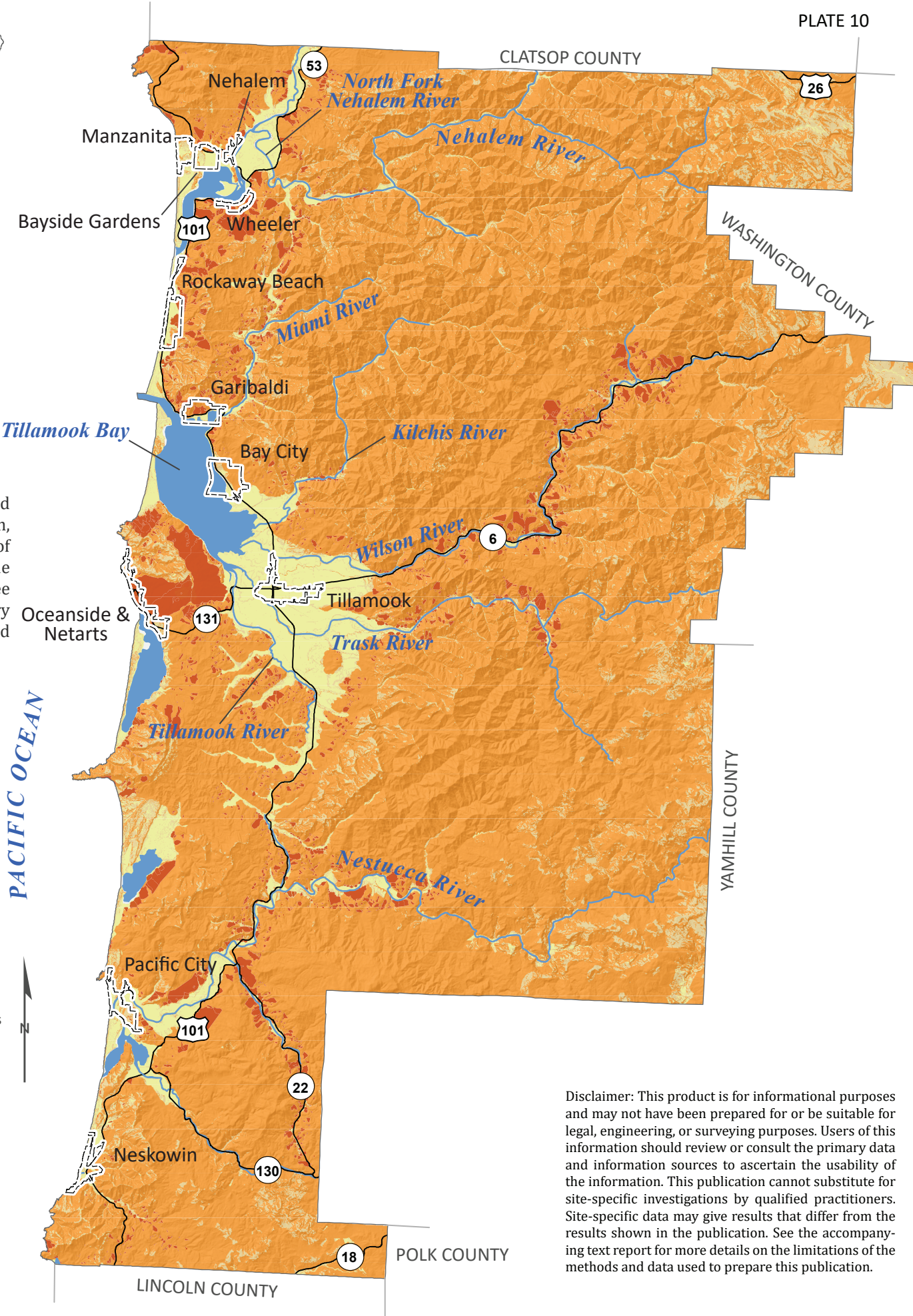
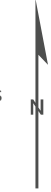


PLATE 10

Disclaimer: This product is for informational purposes and may not have been prepared for or be suitable for legal, engineering, or surveying purposes. Users of this information should review or consult the primary data and information sources to ascertain the usability of the information. This publication cannot substitute for site-specific investigations by qualified practitioners. Site-specific data may give results that differ from the results shown in the publication. See the accompanying text report for more details on the limitations of the methods and data used to prepare this publication.